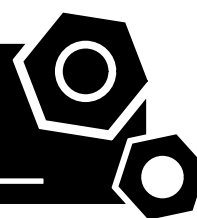


**Generator set**

**Sound-proof type**

**PK6.6S**

**SPECIFICATIONS**



**SK series**  
**PK6.6S**  
**50 Hz @ 1500rpm,1-phase/3-wiring**

**1 Standards & Conditions**

**Design Standards**

The designs and the productions are in conformity with:

- Conformance Européenne (CE)
- China Compulsory Certification (CCC)
- TLC Quality Certification (TLC)
- ISO8528-1995
- GB/T2820-1997

**Environmental Operating Conditions**

- Installation place: Outdoors or indoors (well ventilated).
- Ambient temperature: -25°C to 50°C. The coolant heater is needed when the temperature is below 5°C
- Humidity: Less than 80%.
- Altitude: Below one thousand (1000) meters above sea Level.

**Factory Inspection**

- Inspection items.
- Protection devices working test.
- Starting ability in normal temperature.
- 50% rated power load moment capability.
- Voltage deviation and speed variation: 0%, 25%, 50%, 75%, 100%, 110% Load.

**Painting Process**

- Painting process specifications and colors are based on the manufacturer's standard.
- The customer could also choose the color which the manufacturer offers.

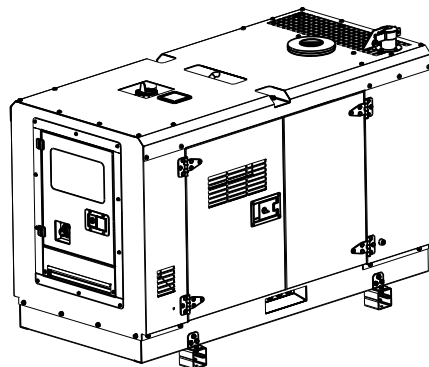
**2 General Features**

- KUBOTA engine D905-BG
- Close coupled to a Stamford alternator PI044F
- Microprocessor control module PLC-702
- SCHNEIDER main circuit breaker: 1-Phase 32A
- Rotate speed governor: Mechanical governor
- Excitation System: Self Excited,SHUNT
- A.V.R.Model: AS480
- Key switch

- Emergency stop switch
- ATS (automatic transfer switch) receptacle
- 1x12V sealed for life maintenance free battery
- Lockable battery isolator switch
- Powder coated canopy
- 50°C radiator
- Oil pump on the engine
- Steel base frame with lifting lugs
- Vibration isolators between the engine/alternator and base frame
- Dry type air filter
- Base fuel tank
- Drain points for fuel tank
- Operation Manual / Parts List / Specifications

**3 Equipment Specification**

**General technical data**

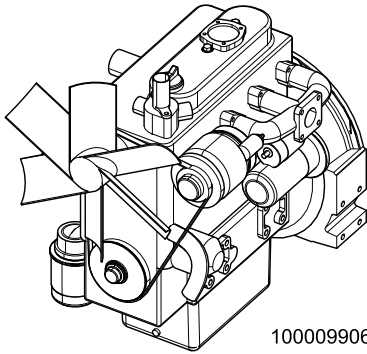


1000020986-AP1-A3

Model.....PK6.6S  
 Structure type .....RS  
 Tank capacity.....40L  
 Dry weigh.....547kg  
 Noise level @7m .....N/A  
 Dimensions L×W×H.....1700×800×1208mm  
 Standby Power ..... 7.3kVA/5.8kW  
 Prime Power ..... 6.6kVA/5.3kW

Voltage	220V	230V	240V
Ampere	3.0A	29A	28A

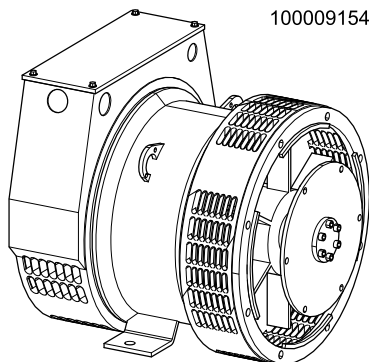
## Engine



1000099068-AP1-A3

Engine Manufacturer/Brand.....	KUBOTA
Engine Model.....	D905-BG
Dimensions L×W×H.....	551×395×605mm
Dry Weigh (approx.).....	93Kg
Number of Cylinders.....	3
Bore.....	72mm
Stroke.....	73.6mm
Displacement.....	0.898L
Compression Ratio.....	23
Type of injection.....	Direct injection
Intake System.....	Natural aspirated
Intake Resistance.....	≤1.96kPa
Back Pressure.....	≤7.07kPa
Cooling System.....	Water cooled
Fan.....	Pusher
Battery Voltage.....	12V
Type of Fuel.....	No.2-D (ASTMD975)
Type of Oil.....	APICD
Oil Capacity.....	5.1L
Type of Coolant.....	Glycol mixture
Coolant Capacity.....	N/A
Standby Power.....	7.4kW
Continuous Power.....	6.6kW
Fuel Consumption(100%load).....	N/A

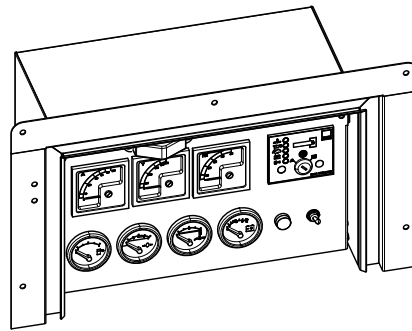
## Alternator



1000091546-AP1-A1

Alternator Manufacturer/Brand.....	Stamford
Alternator Model.....	PI044F
Exciter.....	Brushless
Cooling Fan.....	Cast alloy aluminum
Windings.....	100% copper
Insulation Class.....	H
Winding Pitch.....	2/3
Terminals.....	12
Drip Proof.....	IP23
Altitude.....	≤1000m
Overspeed.....	2250rpm
Air Flow.....	0.11 m³/s(50Hz),0.135m³/s(60Hz)
Voltage Regulation.....	±1.0 %
Total harmonic TGH / THCat no load <	1.5 % - on load < 5%
Telephone Interference.....	THF<2%;TIF<50

## PLC-702 Control System



1000137900-AP1-A1

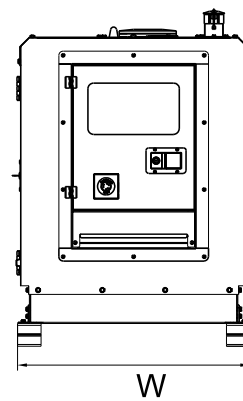
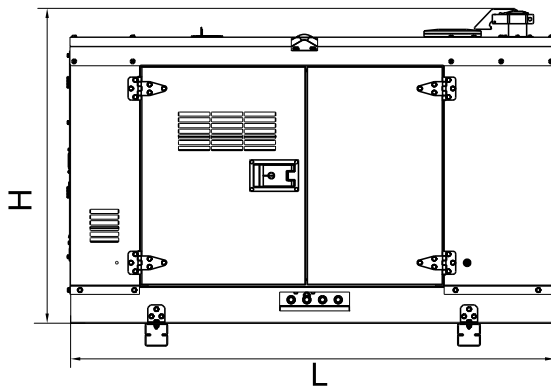
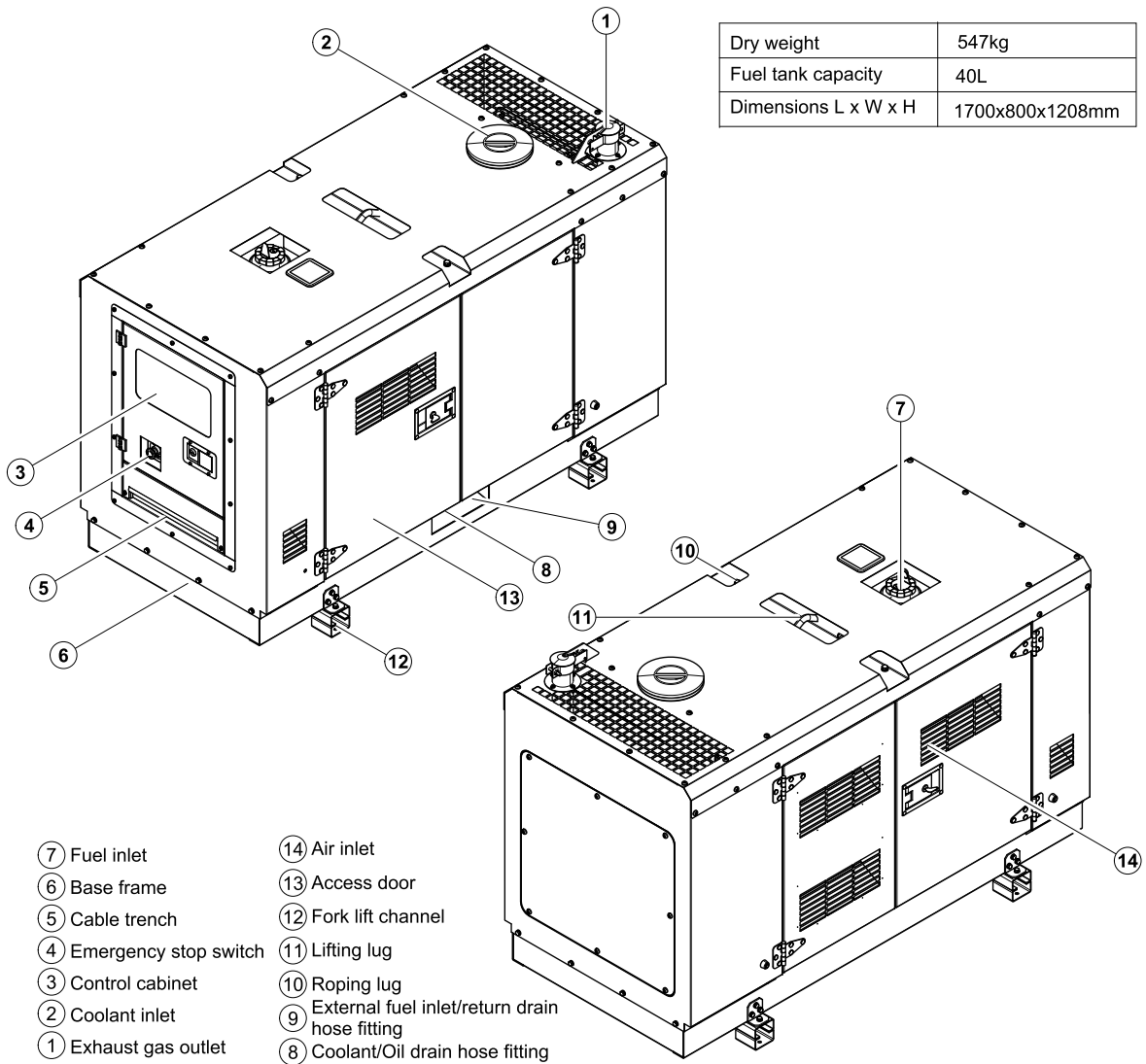
PLC-702 key manual start module is a manual engine control module designed to control the engine via a key switch and push buttons on the front panel. The module is used to start and stop the engine and indicate fault conditions, automatically shutting down the engine and giving a true first up fault condition of an engine failure.

### Standard Control Function

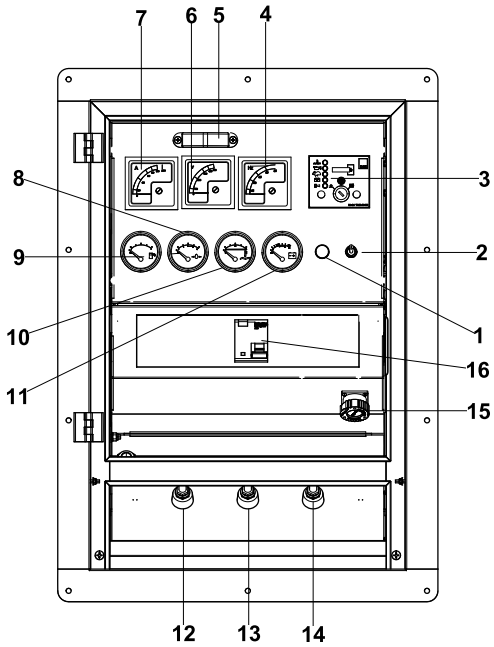
- Manual Engine Control Module
- Low Oil Pressure
- High Engine Temperature
- Auxiliary Shutdown
- Overspeed Protection
- Protection hold-off timer
- Charge Failure warning

## 4 Overall Dimensions

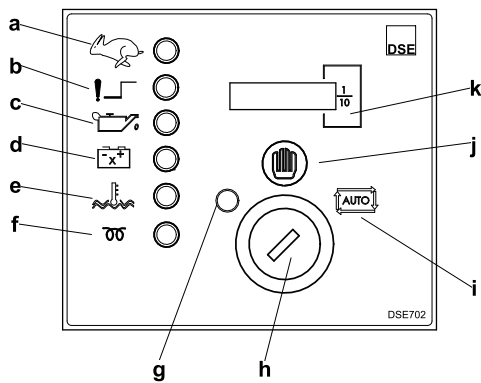
1000020986-DR1-A3



## 5 Control System



**Control & field wiring cabinet**



**Control panel**

Ref.	Description
1	Charge indicator
2	Control cabinet lamp switch
3	Control module
4	Frequency meter
5	Control cabinet lamp
6	Voltage meter
7	Current meter
8	Oil pressure meter
9	Fuel level meter
10	Water temperature meter
11	Battery voltage meter
12	Live wire terminal
13	Neutral wire terminal
14	Ground wire terminal
15	ATS communication interface
16	Main circuit breaker

a	Over speed protection LED
b	Alarm LED
c	Low oil pressure protection LED
d	Charge failure warning LED
e	High engine temperature protection LED
f	Pre-heat LED
g	Stop model position
h	Control module key switch
i	Auto start position
j	Manual start button
k	Time counter